

Design Communications Strategy for Attendance Zones

PAISD Web-site		
<i>DATE</i>	<i>ACTIVITY</i>	<i>STATUS</i>
November 18, 2009	Post Attendance Zones on front page of web-site	Completed
November 19, 2009	Display posters at Stilwell in Front Foyer	Completed
November 20, 2009	Send out Global email to Staff	Completed
November 20, 2009	Alert parents and staff of new attendance zone changes via <i>Call Now Alert System</i>	Completed

News Articles		
<i>DATE</i>	<i>ACTIVITY</i>	<i>STATUS</i>
November 18, 2009	Article written by PA News	Completed
November 22 December TBD if needed	Sunday Sunday Article with Updates	Completed In Progress

Flyers/Brochures		
<i>DATE</i>	<i>ACTIVITY</i>	<i>STATUS</i>
November 20, 2009	Placed in Schools General Office	Completed
November 20, 2009	Placed in Public Library	Completed
November 30, 2009	Mail out to Parents	In Progress

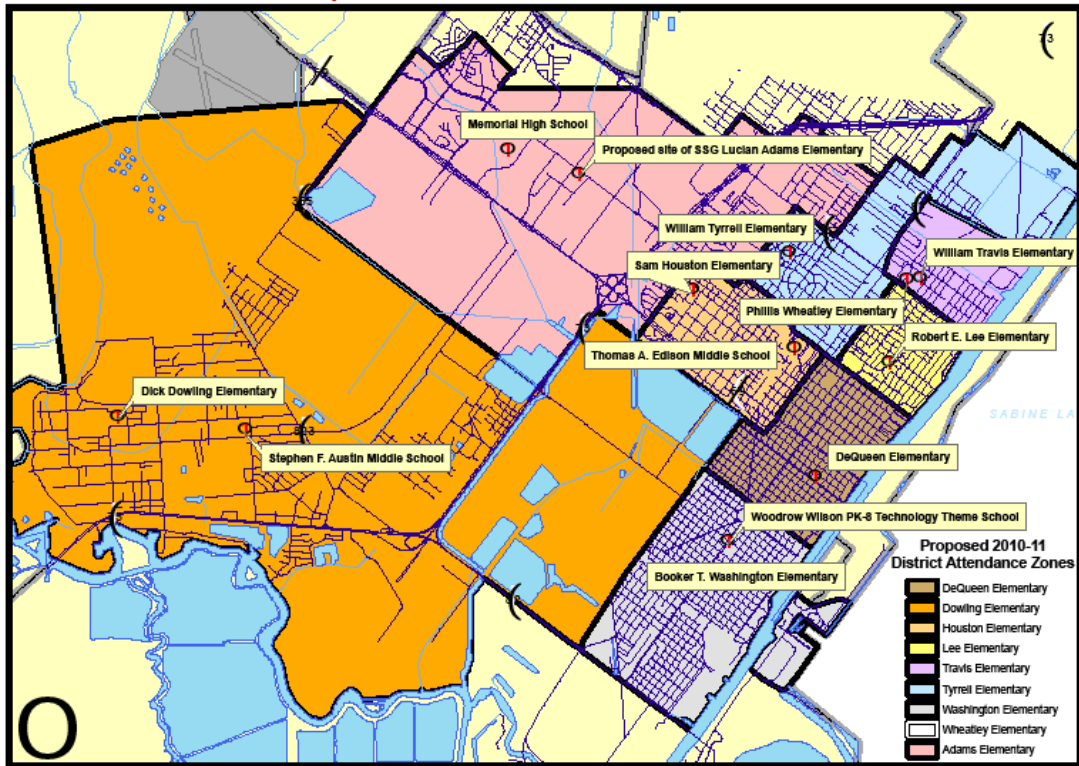
Radio/TV		
November 20, 2009	Send to Radio	Completed

Community Forums		
DATE	ACTIVITY	STATUS
December 2, 2009	Alert parents and staff of Community Forum on Student Assignment Proposal via Call Now Alert System	In Progress
December 10, 2009		In Progress
January 1, 2009		In Progress
January 11, 2009		In Progress
December 14, 2009	Community Forum on Student Assignment Proposal Lee Elementary School 5:30 p.m. – 6:30 p.m.	In Progress
January 12, 2009	Community Forum on Student Assignment Proposal Memorial High School- 5:30 p.m. – 6:30 p.m.	In Progress

Board of Trustees		
DATE	ACTIVITY	STATUS
November 17, 2009	Presentation of Proposed Attendance Zones	Completed
December 17, 2009	Update of Progress	
January 28, 2009	Recommendation to Board for Formal Approval	

Port Arthur Independent School District

Proposed 2010-11 District Attendance Zones



Planning or Success

Port Arthur ISD's Attendance Zones are based on the belief that we determine our schools' future and the best education for our youth by concentrating the energies of the community in a participative process and agreement.

PROCESS:

We began the process of informing the public during the 2008-2009 school year of the proposed attendance zones. You will be notified by phone within the next few weeks about the first of two Community Forums. Once the attendance zones are approved by the Board of Trustees, the next phase will involve actual implementation for the 2010-2011 school year.

For more information, please direct questions to 409 989-6244.

Proposed 2010-11 Elementary Attendance Zones

Dowling

Dowling's attendance zone extends from Rodair Gully to Taylor's Bayou, east to the southern extension of the West Port Arthur Road, south to Hwy. 73, east to Savannah Avenue, north to FM 365, east to El Paso Avenue, north to 90th Street, west on an imaginary line to Viterbo Road crossing West Port Arthur Road to an imaginary line extending from Diamond Avenue, northwest to the levee.

Wheatley

Wheatley's attendance zone encompasses the entire district.

Washington

Washington's attendance zone extends from Hwy. 82 (West Levee Road) and the ship channel east to New Orleans Avenue, north to the KCS Railroad, and west to Hwy. 82 (West Levee Road). It also includes the Pleasure Island residential area.

DeQueen

DeQueen's attendance zone extends from New Orleans Avenue and the ship channel east to 9th Avenue, north to Gulfway Drive, west to Marshall Avenue, north to north to the KCS Railroad, and west to New Orleans Avenue.

Lee

Lee's attendance zone extends from 9th Avenue and the ship channel east to Stadium Road, north to 14th Street, and west to 9th Avenue.

Travis

Travis' attendance zone extends from Stadium Road and the ship channel east to Main Avenue, north to Foster Drive, northwest along an imaginary line that extends from the intersection of Main Avenue and Foster Drive to Gulfway Drive between Perry and Owens Avenues, and west to Jefferson Drive.

Tyrrell

Tyrrell's attendance zone extends from 9th Avenue and 14th Street east to Stadium Road, north to Gulfway Drive, east to Perry Avenue, south along an imaginary line that extends to Foster Drive and Main Avenue, south on Main Avenue to the ship channel, east to Taft Avenue, north to a line extending from Lewis Drive, west to a line extending from Nottingham, north to a line extending from 13th Street, west to a line intersecting the east end of Warren, north to a line midway between Warren and Garner, west to Main Avenue, north to 25th Street, west to Jefferson Drive (Hwy. 347), north to 32nd Street, west to 11th Avenue, south to 25th Street, and south along the KCS Railroad to 9th Avenue.

Houston

Houston's attendance zone extends from Gulfway Drive and Marshall Avenue, east to 9th Avenue, north to the KCS Railroad, north to 11th Avenue, north to 32nd Street, west to 9th Avenue, north to 39th Street, west to the Texaco reservoir, and south to Gulfway Drive.

Adams

Adam's attendance zone extends from Savannah Avenue east on Hwy. 73, to an imaginary line parallel with the east end of the Texaco reservoir, south to 39th Street, east to 9th Avenue, south to 32nd Street, east to Jefferson Drive (Hwy. 347), south to 25th Street, east to a point midway between Graves and Berry, north on an imaginary line that extends to 32nd Street, north on Graves to Terrell, east to an imaginary line behind and parallel to Graves, north to 39th Street, west to a block west of Lawndale (including 5301 W. Link), north to Monroe, west to Twin City Hwy. (Hwy. 347), north to Spur 136, northwest to the KCS Railroad on an imaginary line that extends from the southwestern portion of Kylewood to a point west of Brazos (including Bent Tree Village apartments 141-164 and 241-164), north on an imaginary line to a point east of Turtle Creek Drive (including all 2 bedroom units of Stonegate Manor), northwest on Cobblestone Lane (4120, 4110 and 4100) to Chimney Rock Lane, southwest to Chevy Chase Lane, northwest to Chandelle Lane, southwest to Greenbriar Lane, north to Blackberry Lane, west to 9th Avenue, north to a point about 660 feet below FM

365, and continuing west on an imaginary line parallel to FM 365 to Hwy. 287, north to FM 365, west to the Main C Canal, south to Hwy. 73, and west to Savannah Avenue.

Proposed 2010-11 Middle School Attendance Zones

Edison

Edison's attendance zone includes all of the areas described for Houston, Adams, Tyrrell and Travis. ESL students in grades 6 through 8 living throughout the District also attend Edison.

Wilson

Wilson's attendance zone includes all of the areas described for Washington, DeQueen and Lee. Also, PK through 5th grade students selected by lottery to attend the Technology Theme School attend Wilson.

Austin

Austin's attendance zone includes the area described for Dowling. In addition, select students from throughout the District also attend Austin.

Proposed 2010-11 High School Attendance Zone

Memorial

Students in grades 9 through 12 living throughout the District attend Memorial High School.

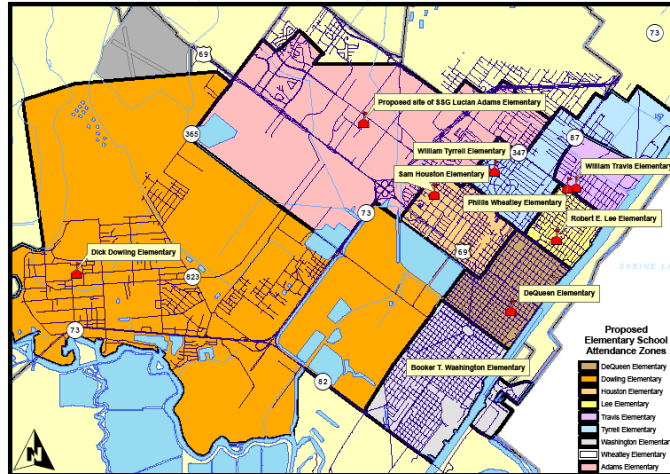
Proposed 2010-11 Early Childhood Center Attendance Zones

Wheatley

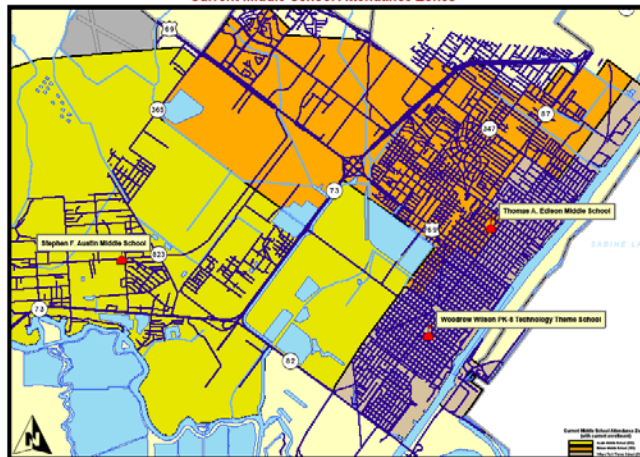
Students in the Headstart Program, Preschool Program for Children with Disabilities (PPCD), and pre-kindergarten living throughout the District attend Wheatley School of Early Childhood Programs.



Port Arthur Independent School District
Proposed 2010-11 Elementary Attendance Zones



Port Arthur Independent School District
Current Middle School Attendance Zones



Port Arthur Independent School District
Proposed 2010-11 High School Attendance Zone

